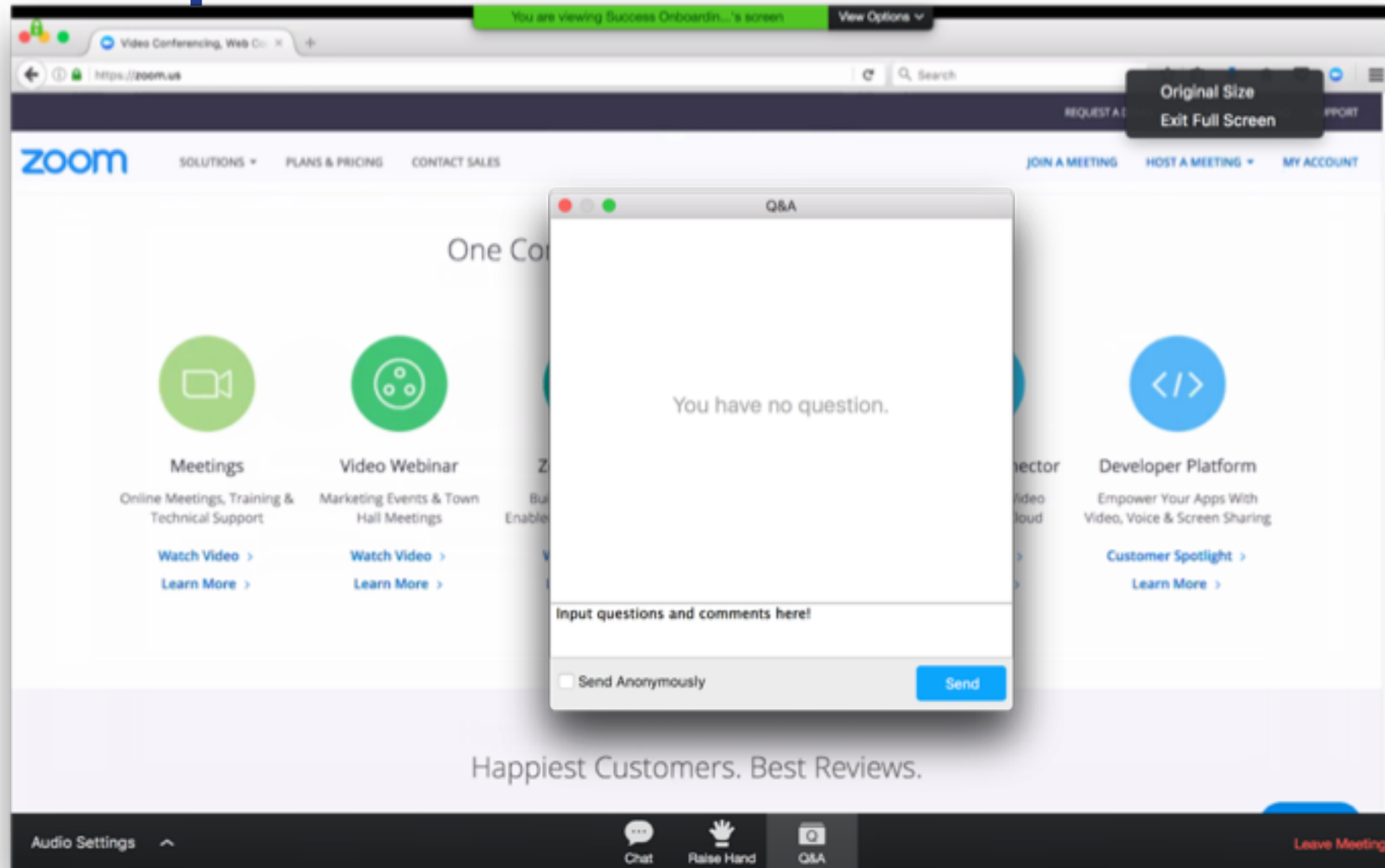




## **August Monthly Webinar: College Applications**

**Welcome back to school educators!**

# Participation & Interaction







# ABOUT TEXAS ONCOURSE

Texas' definitive source for college and career planning.

TEXAS  NCOURSE



# **College, Career, and Military Readiness Tools For Your School**

[www.texasoncourse.org](http://www.texasoncourse.org)

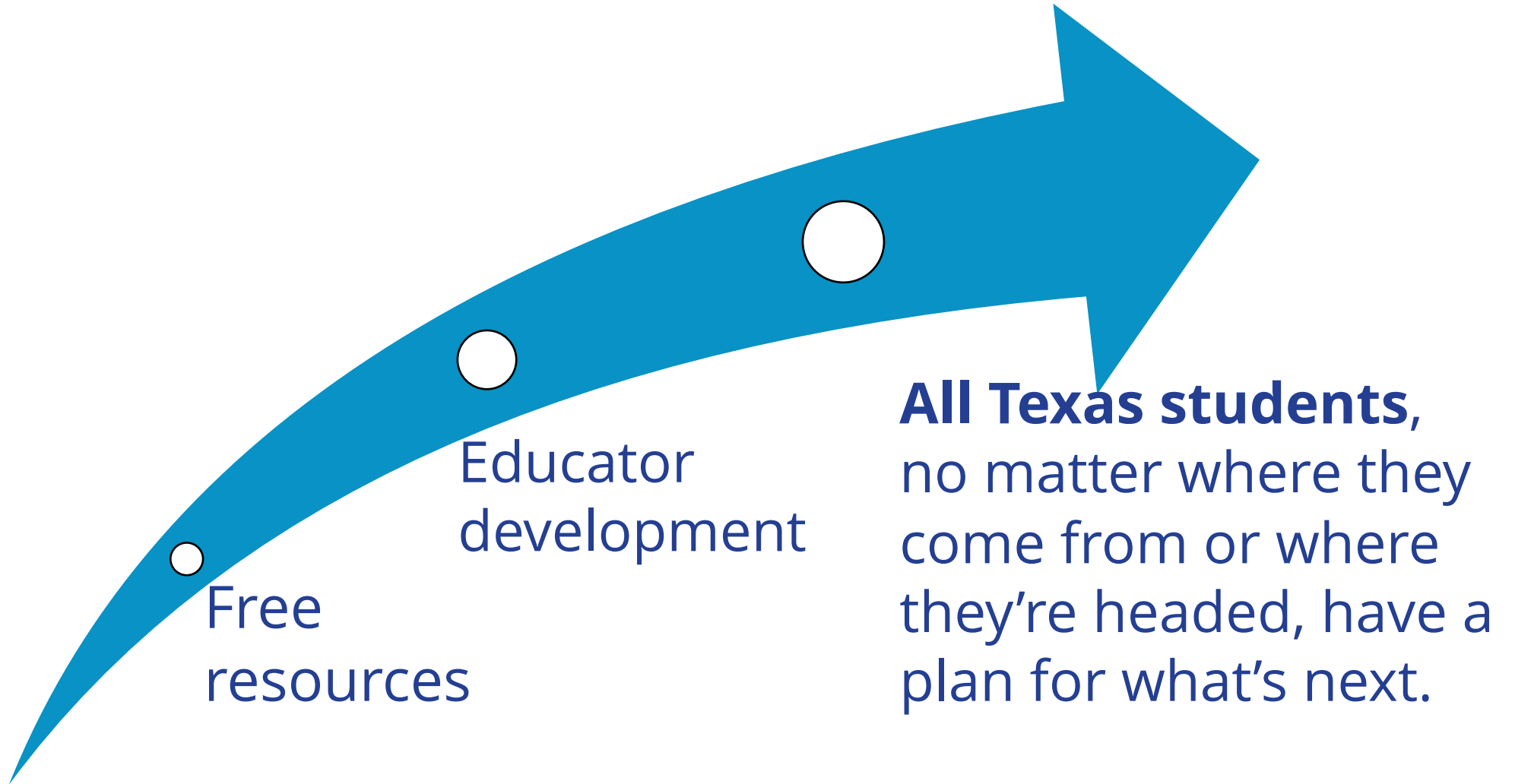
**TEXASONCOURSE**



A group of diverse middle and high school students are sitting on wooden bleachers in a school setting. They are engaged with technology; some are using laptops, while others are looking at their smartphones. The image has a soft, blue-tinted overlay. The text 'Equipping middle and high school students for postsecondary success' is written in a large, bold, white sans-serif font across the middle of the image.

# Equipping middle and high school students for postsecondary success

# WHAT WE DO



**More than**



**12,000  
EDUCATORS**



**3,000  
SCHOOLS**



**900  
DISTRICTS**

**use Texas OnCourse**

# AGENDA

- Introductions
- TXOC Academy: Postsecondary Pathways
  - Samantha Gonzalez
- Apply Texas
  - David Muck, The University of Texas at Austin
- Common App Updates
  - Meredith Lombardi, The Common Application
- Leader Fellow Best Practices
  - Will Collins, Kingwood High School, Humble ISD
- Q & A and Wrap up

# Lara Gueguen

Senior Partnerships Coordinator, Texas OnCourse





# Samantha Gonzalez

Program Coordinator, Texas OnCourse





# David Muck

Principal Software Developer/Analyst

ApplyTexas, University of Texas at Austin



# Meredith Lombardi

Associate Director, Outreach and Education

The Common Application

# Will Collins

Texas OnCourse Leader Fellow  
Counselor, Kingwood High School  
Humble ISD



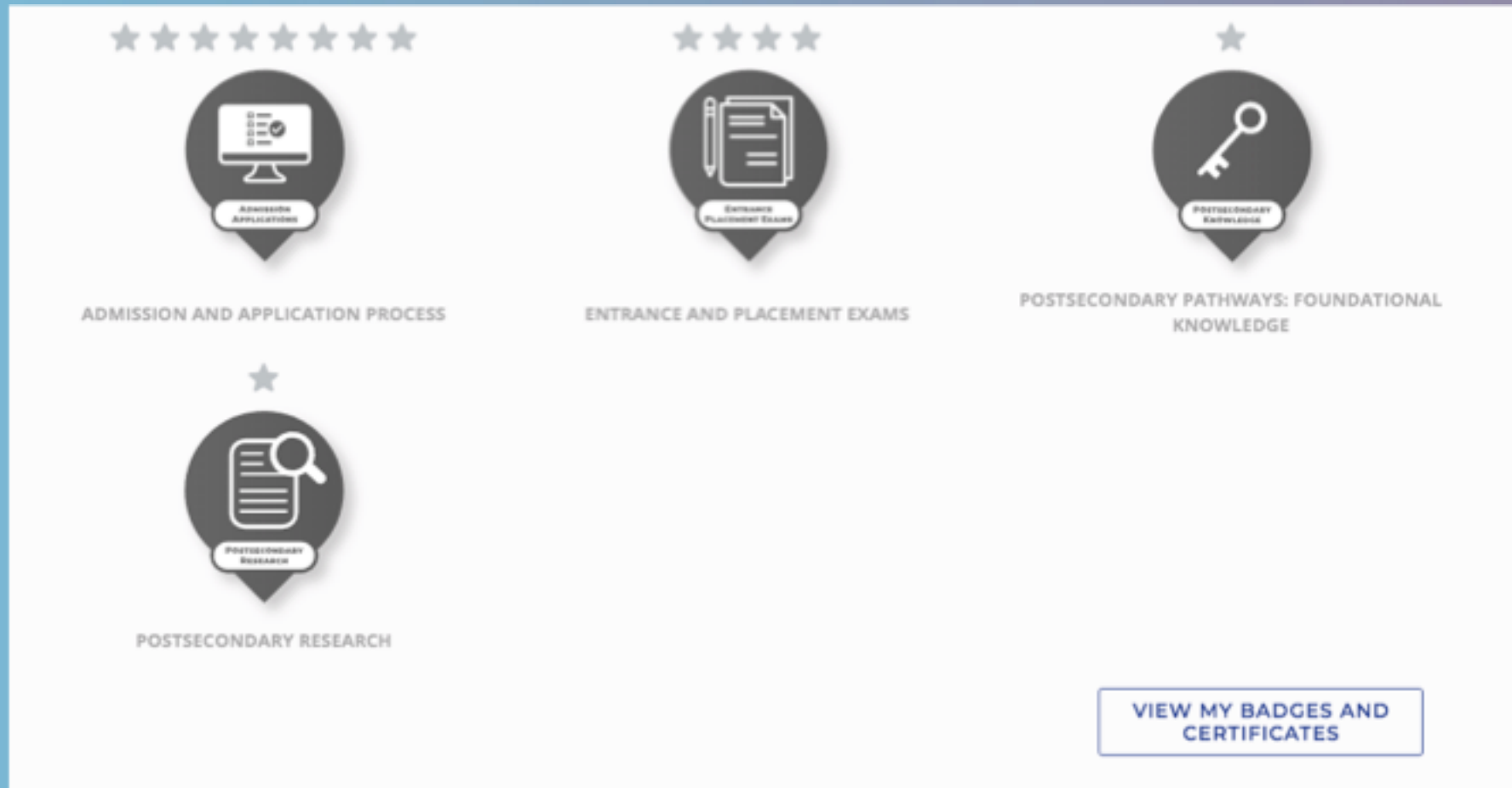


# The Academy

Postsecondary Pathways

Admission and Application Process (offers 8 CPE credits)

# The Admission and Application Process



Dashboard

Explore Modules

Module Directory

## LAST UNIT VISITED

APPLYTEXAS

## Additional Resources

CONTINUE

## NEW CONTENT

FAFSA

Added July 13 at 2:00 am

Explore Module

TASFA

Added July 13 at 2:00 am

Explore Module

Scholarship Applications

Explore Module

## MY PROGRESS



Financial Aid



Postsecondary Pathways

FINANCIAL AID APPLICATION  
PROCESSSCHOLARSHIP APPLICATION  
PROCESS

COLLEGE COST



Specialties



Where are my badges?

Support

Feedback

Web Accessibility

Glossary





CERTIFICATES

BADGES

You have received the following certificates from Texas OnCourse.



### Financial Aid: Foundational Knowledge

Awarded on Oct. 10, 2017 3:48 PM

This certificate of continuing professional education credit affirms that the educator has successfully completed the Financial Aid: Foundational Knowledge course requirements by mastering the content in the Basic Principles of Financial Aid module.



### Postsecondary Pathways: Foundational Knowledge

Awarded on Sep. 22, 2017 5:50 PM

This certificate of continuing professional education credit affirms that the educator has successfully completed the Postsecondary Pathways: Foundational Knowledge course requirements by mastering the content in the Basic Principles of Postsecondary Pathways module.



### Postsecondary Research

Awarded on Oct. 4, 2017 7:57 PM

This certificate of continuing professional education credit affirms that the educator has successfully completed



PRINT



Badges selected 0



# **RESOURCES SPOT LIGHT**

**Definitions of Admission Options**

**Common App vs ApplyTexas**

**Common App Follow-Up**



# DEFINITIONS OF ADMISSION OPTIONS IN HIGHER EDUCATION

## STUDENTS: WHICH COLLEGE ADMISSION PROCESS BEST SUITS YOU?

### NONRESTRICTIVE APPLICATION PLANS

#### Regular Decision

**DEFINITION:**

Students submit an application by a specified date and receive a decision in a clearly stated period of time.

**COMMITMENT:**

NONBINDING

#### Rolling Admission

**DEFINITION:**

Institutions review applications as they are submitted and render admission decisions throughout the admission cycle.

**COMMITMENT:**

NONBINDING

#### Early Action (EA)

**DEFINITION:**

Students apply early and receive a decision well in advance of the institution's regular response date.

**COMMITMENT:**

NONBINDING

Students are not restricted from applying to other institutions and have until May 1 to consider their options and confirm enrollment.

### RESTRICTIVE APPLICATION PLANS

#### Early Decision (ED)

**DEFINITION:**

Students make a commitment to a first-choice institution where, if admitted they definitely will enroll. The application deadline and decision deadline occur early.

**COMMITMENT:**

BINDING

#### Restrictive Early Action (REA)

**DEFINITION:**

Students apply to an institution of preference and receive a decision early. They may be restricted from applying ED or EA or REA to other institutions. If offered enrollment, they have until May 1 to confirm.






**COMMITMENT:**

NONBINDING

Students are responsible for determining and following restrictions.

## COMMON APP VS APPLYTEXAS

Students may be deciding on which application system to use to apply to college. Help students evaluate the characteristics of each application to determine which best fits their needs.

	COMMON APP	APPLYTEXAS
 <b>Colleges</b>	Accepted by over 750 colleges throughout the US and around the world	Accepted by over 130 colleges throughout Texas
 <b>Essays</b>	Complete the personal essay once and send it to multiple colleges (writing supplements will not transfer)	Complete the essay once and upload it for each college (even when using the copy feature)
 <b>Early Decision</b>	Submit an electronic Early Decision agreement	Submit the Early Decision agreement via mail
 <b>Waivers</b>	Electronic fee waiver submission available	Electronic fee waiver submission is unavailable*
 <b>Recommendations</b>	Recommenders can submit their recommendations electronically	Recommenders can submit their recommendations via mail

\*The ApplyTexas system does not offer any fee waivers. Instead, students should complete and submit their SAT, ACT, institution-specific, or NACAC fee waiver.

## Common App Follow-Up Checklist

Follow these steps to make sure your Common App requirements are complete and submitted.

### ☐ Check the Recommenders and FERPA tabs frequently for each school

This will let you know when your transcripts and letters of recommendation have been submitted and downloaded. If you see “submitted,” that means your counselor has sent the report. When you see “downloaded” that means the college has downloaded it into its system.

### ☐ Check the Review and Submit tab

Check the Review and Submit tab to determine whether the application has been submitted successfully. You should see a date and time stamp, the application type (e.g., first year, early action), and the entering semester (e.g., fall 2019).

### ☐ Make sure you submitted your writing supplement (if applicable)

When everything is submitted, your dashboard will show green checkmarks in places where there were yellow dots.

### ☐ Follow up after submission for all colleges

After you submit your applications, many schools will send you an email to acknowledge receipt of your application and provide instructions to establish a personal account on the school's portal.

When you log in to the individual school sites, you will be able to see what has been completed and received.

If you know that you have done everything correctly but still find something missing, call the school in question and wait for them to confirm that they have everything. Remember, it takes time to process all the pieces of the application.

### ☐ Check your email daily

Many schools will send you a follow-up email to confirm that they have received everything or notify you that something is missing. It is incumbent upon you to check your email daily to make sure that your colleges have received everything.

(College Bound Mentor, 2018)

## ApplyTexas

2 sections • 14 Pins • 203 followers

The ApplyTexas college application system was created through a collaborative effort between the Texas Higher Education Coordinating Board (THECB) and the colleges and universities represented on the website. The goal is to offer a centralized means for both Texas and non-Texas students to apply to the many outstanding postsecondary institutions available in Texas.

Your Pins

More ideas

## Common App

2 sections • 22 Pins • 200 followers

The Common Application (also known as Common App) provides a single college application system that makes it easier for students to apply to multiple colleges and universities. Whereas ApplyTexas only applies to colleges and universities in Texas, Common App has member colleges all over the United States. As a result, Common App is particularly helpful for students who are planning to apply to out-of-state colleges.

Your Pins

More ideas

## PDF Downloads



## PDF Downloads



## Videos



## Universal College Application

2 sections • 13 Pins • 200 followers

Created in 2007, the Universal College Application (UCA) allows students and families to create a centralized college application with their demographic information, extracurricular activities, and grades.

Your Pins

More ideas

## PDF Downloads



## Coalition Application

2 sections • 16 Pins • 201 followers

The Coalition for Access, Affordability, and Success is committed to removing the barriers that have persistently kept low-income and first-generation students from attending and graduating from college. The Coalition developed new college planning and application tools to assist students in preparation for, and during the admissions process.

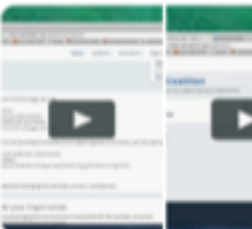
Your Pins

More ideas

## PDF Downloads



## Videos



[www.pinterest.com/texasoncourse](http://www.pinterest.com/texasoncourse)



# UPDATES

2020-2021 Application Cycle



# About ApplyTexas



## Fall, 1998:

The first ApplyTexas application opened for freshman applicants

## Fall, 2000:

All other 4-year application types became available  
The administrative site and help desks were developed

## Fall 2007:

The 2-year and scholarship applications were added

## Fall 2008:

The Counselor Suite was developed

## Fall 2012:

FAFSA data was added to the Counselor Suite

# About ApplyTexas

## Application Totals

- Total apps submitted for the Summer 2017-Spring 2018 cycle: 1,588,239
- Total apps submitted for the Summer 2018-Spring 2019 cycle: 1,629,908
- Increase of 2.6%



# Application Changes

- Opt-out of directory information on certification page \*
- Test scores module optional
- Multiple deadlines for a semester displayed to date order
- Decision tree for application types available
- New essay prompt A (US and Int'l) freshman \*
- Links added to successful submission page and email \*
- Removed input for high school code



## **App Changes** **2020-21**

### **Opt-out of directory information on certification page**

"The Texas Higher Education Coordinating Board (THECB), or its authorized representative(s), has permission to contact you regarding your ApplyTexas application and/or regarding related educational outreach purposes (including, for example, to make you aware of financial aid opportunities) using any of the contact information for communication methods (email, mail, phone, mobile, text message, social media, or automated telephone dialing equipment). Your information will not be sold for commercial purposes."

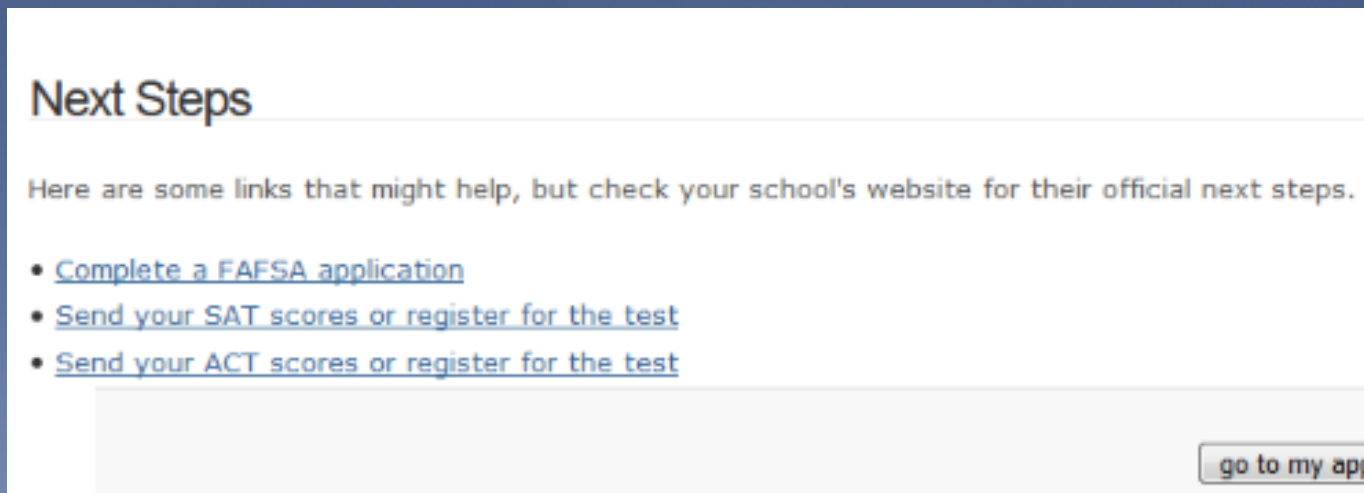
## **App Changes** **2020-21**

### **New essay prompt A (US and Int'l) freshman**

“Tell us your story. What unique opportunities or challenges have you experienced throughout your high school career that have shaped who you are today?”

## **App Changes** **2020-21**

Links added to successful submission page and email.  
Based on app type, links to SAT, ACT, TOEFL, GRE,  
FAFSA will be provided in Next Steps.



**Next Steps**

Here are some links that might help, but check your school's website for their official next steps.

- [Complete a FAFSA application](#)
- [Send your SAT scores or register for the test](#)
- [Send your ACT scores or register for the test](#)

go to my app



The 2020-21 application is now open  
to the public.

# Questions? Need help?

[applytexas@austin.utexas.edu](mailto:applytexas@austin.utexas.edu)  
[applytexashsc@austin.utexas.edu](mailto:applytexashsc@austin.utexas.edu)




# What's New with Common App: 2019-2020 System Enhancements

---

Meredith Lombardi, Outreach and Education

August 6, 2019





The Common Application is a not-for-profit membership organization committed to the pursuit of access, equity, and integrity in the college admission process.

# Common App Membership 2019-2020

897

Member  
Institutions

50

U.S. states,  
DC, and PR

63

International  
members

209

Public  
Institutions

19

Countries  
outside U.S.

404

No application fee



# New Members 2019-2020

70

---

...and counting

30

---

U.S. states

50th

---

State  
**Welcome**  
**North Dakota!**

## Public Institutions

- Arkansas State University (AR)
- College of Charleston (SC)
- CUNY Baruch College (NY)
- CUNY Brooklyn College (NY)
- CUNY College of Staten Island (NY)
- CUNY Hunter College (NY)
- Eastern Michigan University (MI)
- Florida Atlantic University (FL)
- Florida Gulf Coast University (FL)
- Iowa State University (IA)
- Kansas State University (KS)
- Missouri Southern State University (MO)
- Missouri State University (MO)
- Pennsylvania College of Technology (PA)
- Shawnee State University (OH)
- **The University of Texas at Dallas (TX)**
- University of Arkansas (AR)
- University of Florida (FL)
- University of Maryland Eastern Shore (MD)
- University of Minnesota Crookston (MN)
- University of North Dakota (ND)
- University of South Carolina (SC)
- **University of Texas Arlington (TX)**
- Wichita State University (KS)

# Common App in Texas



Austin College  
Baylor University  
Rice University  
Southern Methodist University  
Southwestern University  
St. Edward's University

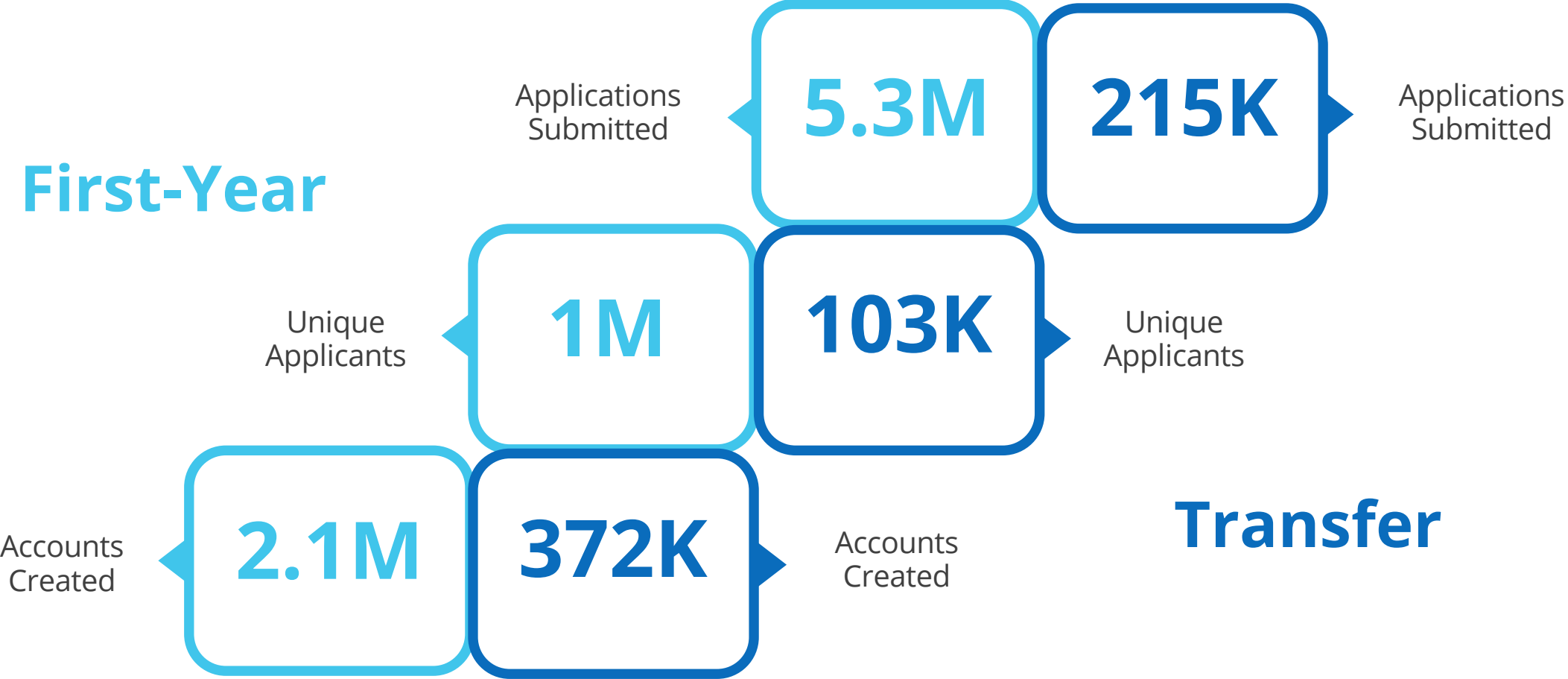
Texas Christian University  
Texas Lutheran University  
The Culinary Institute of America (TX)  
**The University of Texas at Dallas**  
Trinity University

University of Dallas  
University of Houston  
University of North Texas  
**University of Texas Arlington**  
**University of the Incarnate Word**

# Applicants

2018-2019

First-Year



# Recommenders

## 2018-2019

First-Year

Forms  
Submitted

Forms  
Submitted

27M

256K

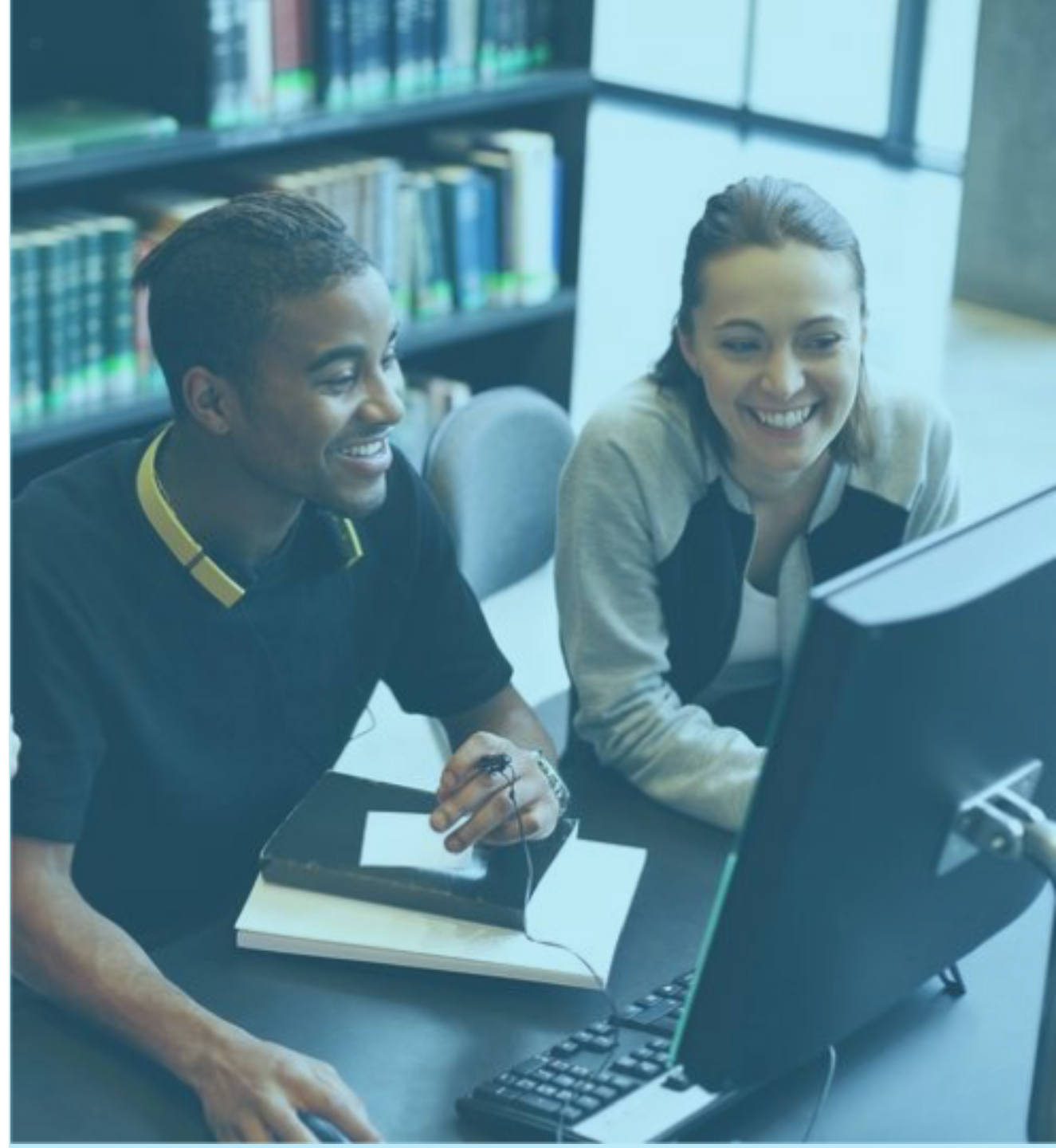
652K

98K

Recommenders

Recommenders

Transfer



# Reach Higher

We're proud and excited that Common App and Reach Higher have united to help millions more students live their college dreams.



Better Make Room



Up Next



School Counselor of the Year



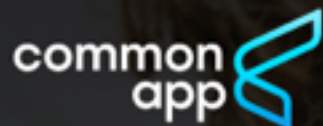
College Signing Day



Beating the Odds





[EXPLORE](#)[PLAN](#)[APPLY](#)[Counselors and recommenders ▾](#)[Members ▾](#)[Log in](#)[Create an Account](#)

# Your future starts here

Whether you're applying to college for the first time or looking to complete your degree, Common App will help you reach new heights.

[Apply now](#)

# Explore colleges

- Expanded filter options
- Sort by FY vs. TR applications
- Map and list views of colleges
- PDF export of college lists

common app

EXPLORE PLAN APPLY Counselors and recommenders Members Log in Create an Account

## Explore colleges

Search Common App colleges by name, city, state, or country Search

Grid view Map view

41 colleges found Print search results Sort by College name, A to Z

✓ Accepts first-year applications

✓ South

✓ Accepts self-reported test scores - First Year

✓ Offers merit-based aid

Clear filters

☒ Accepts first-year applications

☐ Accepts transfer applications

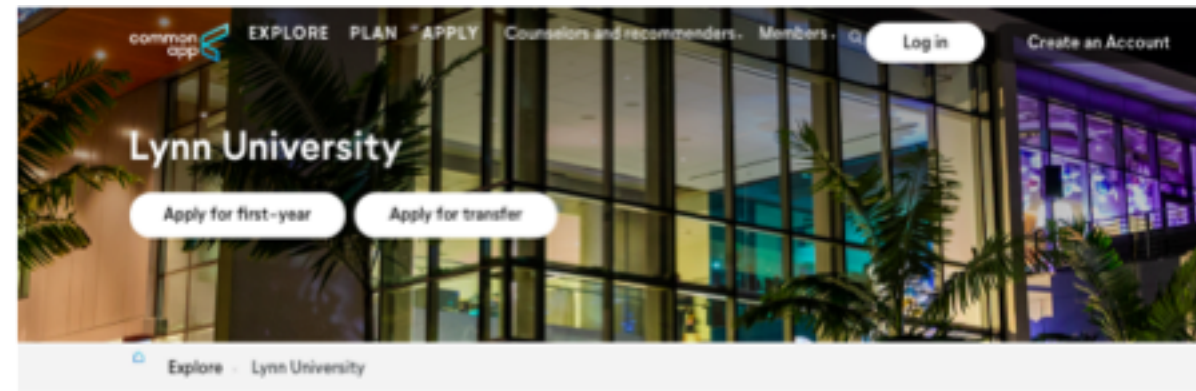
Location

Lynn University  
Boca Raton, FL

- 1 Barry University  
Miami, FL
- 2 Florida Institute of Technology  
Melbourne, FL
- 3 Florida Southern College  
Lakeland, FL
- 4 Keiser University Flagship Campus - West Palm...  
West Palm Beach, FL
- 5 Lynn University  
Boca Raton, FL
- 6 New College of Florida  
Sarasota, FL

# College details

- Consistent applicant experience
- Clearer details on First-Year vs. Transfer Application requirements
- Calls-to-action for both FY and TR
- Embedded virtual tours and image galleries
- Flexibility to showcase academic programs and campus



Lynn University is an independent college based in Boca Raton, Florida, with approximately 3,000 students from nearly all 50 states and over 100 countries. U.S. News & World Report ranks Lynn as the most international university in the region. Lynn's NCAA Division II Fighting Knights have won 25 national titles, its Conservatory of Music features a world-renowned faculty of performers, and its nationally recognized Institute for Achievement and Learning empowers students with learning differences. The school's Dialogues curriculum and award-winning iPad program help Lynn graduates gain the intellectual flexibility and global experience to fulfill their potential in an ever-changing world.

Accepts first-year applications  
Accepts transfer applications South Private  
Suburban Medium (2,001 to 14,999) Co-Ed  
Offers merit-based aid Offers need-based aid

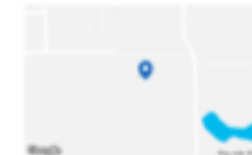


## Academic Programs

- Design
- Science
- Technology
- Liberal Arts
- Music
- Art & Design
- Government/Political Science



## Admissions office



Address  
3601 N Military Trail  
Boca Raton, FL 33431, United States of America

Email  
[admission@lynn.edu](mailto:admission@lynn.edu)

Phone number  
(561) 237-7900

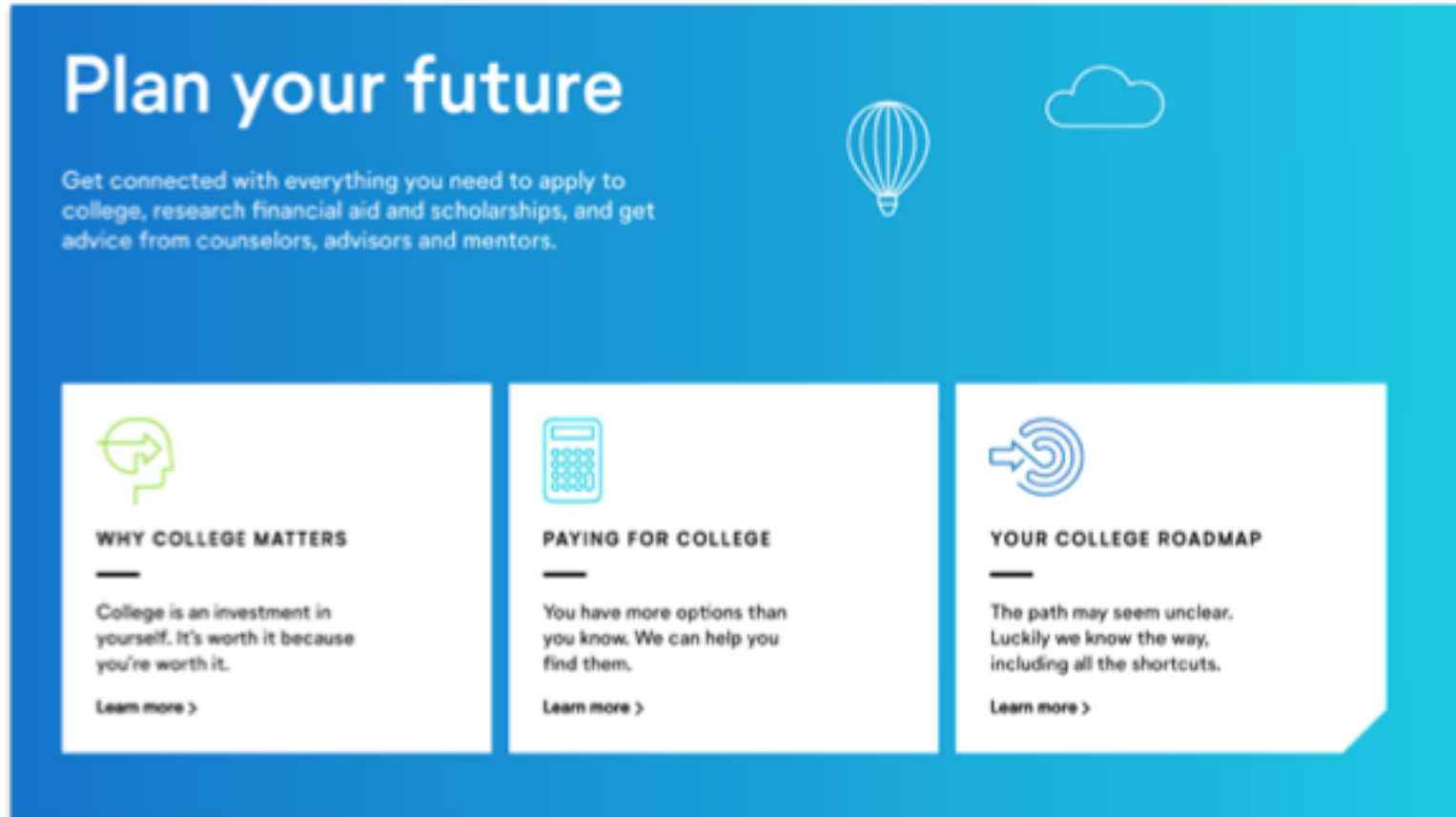
## For first-year students

Admissions website  
[www.lynn.edu](http://www.lynn.edu)

Financial aid website  
[www.lynn.edu/admission/tuition-aid/undergraduate](http://www.lynn.edu/admission/tuition-aid/undergraduate)


# Plan for college

- College roadmaps for traditional and non-traditional students
- Links to additional resources and tools for applicants
- Updates to Common App Ready for first-year and transfer



**Plan your future**


Get connected with everything you need to apply to college, research financial aid and scholarships, and get advice from counselors, advisors and mentors.



**WHY COLLEGE MATTERS**

College is an investment in yourself. It's worth it because you're worth it.


[Learn more >](#)



**PAYING FOR COLLEGE**

You have more options than you know. We can help you find them.

[Learn more >](#)



**YOUR COLLEGE ROADMAP**

The path may seem unclear. Luckily we know the way, including all the shortcuts.

[Learn more >](#)



# 2019-2020 Application Enhancements

---

## Project Drivers

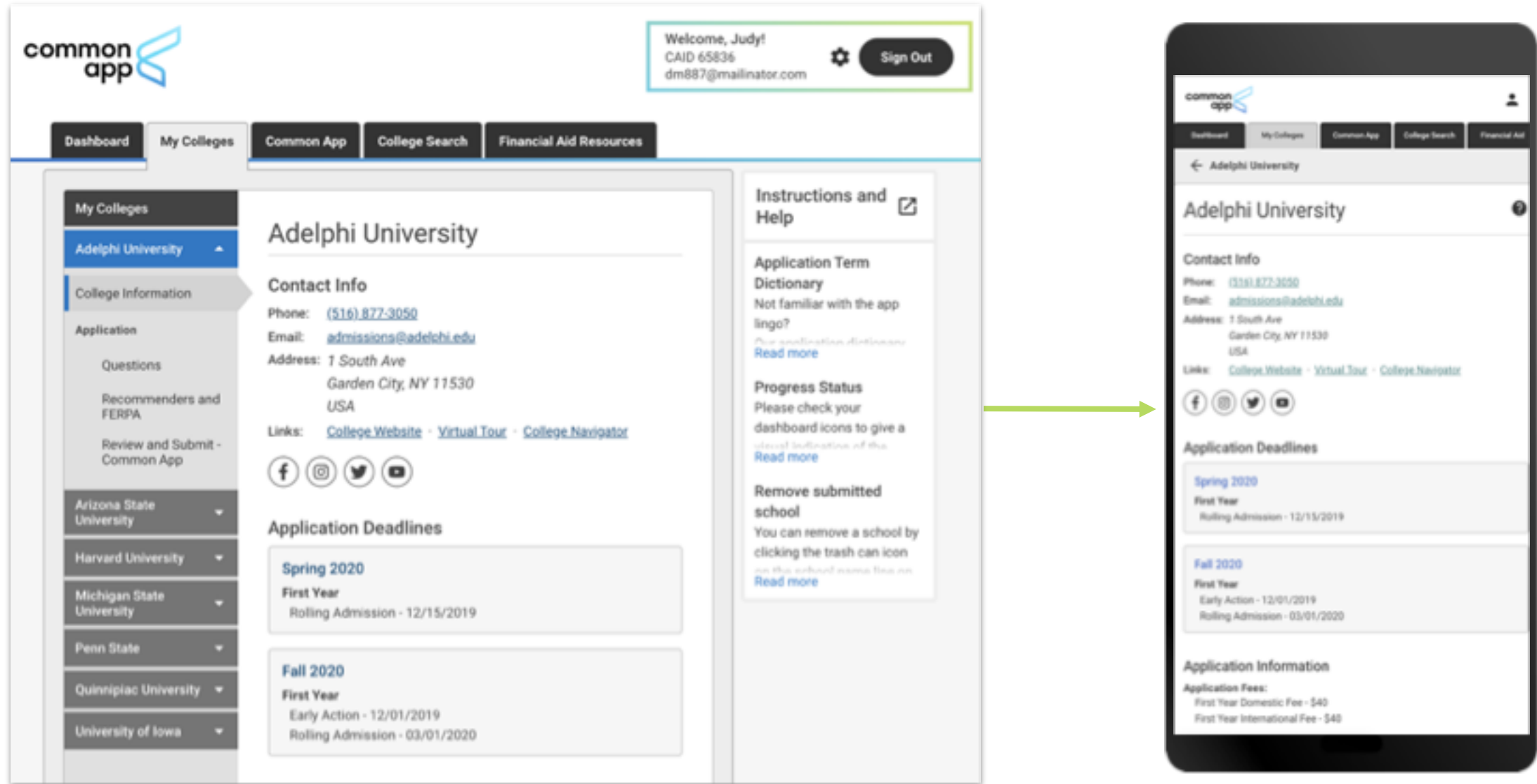
- Modernization
- Accessibility
- Mobile Responsiveness
- Branding

## Improved workflows

- College search
- Address lookup
- High school lookup
- Activities section instructions
- Removal of Criminal History question from common portion of application
- Recommenders & FERPA

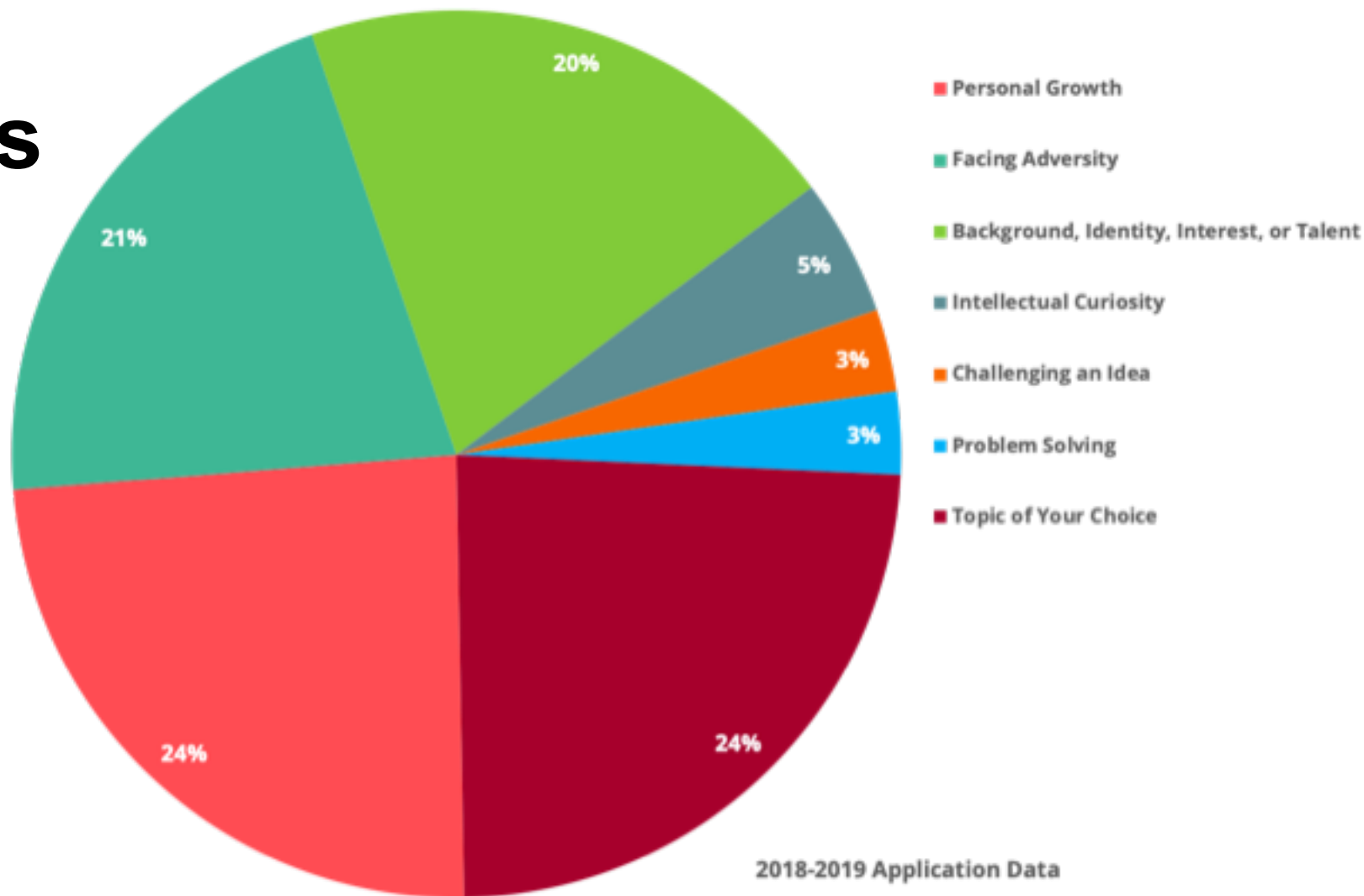


# On any device



# No changes to the 2019-2020 Essay Prompts

**Pro tip:** Students can use content from Google Drive in their application. 🗂️





## Application Submission



# Submitted!

## Congratulations!

You have successfully submitted your Common Application for First Year students to **Adelphi University**.

Please note that you may submit the optional Adelphi University Writing Supplement if you want it considered as part of your application.

You can review the status of your Common Application requirements in the Dashboard tab. Please ensure that any incomplete requirements are submitted prior to the college's application deadline.



Celebrate!

Okay

# Tracking student progress

- Students can invite 1 counselor and up to 3 advisors
- Counselors and advisors can track student progress in the Common App recommendation system
- Counselors and advisors can review college-level details for each student
- Students can share a PDF preview of their in-progress application
- Counselor information is shared with colleges; Advisor information is not

Profile Students Resources										
Search by student name										Application Requirements
Student name		Next deadline	Student status							
			Profile	Family	Educ.	Test.	Activ.	Writ.	C&G	Preview
Cash, Johnny			✓	✓	✓	✓	✓	✓	✓	
Dylan, Bob		—	✓	✓	✓	✓	✓	✓	✓	
Guthrie, Woody			✓	✓	✓	✓	✓	✓	N/A	
Mitchell, Joni			✓	✓	✓	✓	✓	✓	✓	
Seeger, Pete		—	✓	✓	✓	✓	✓		✓	
Simon, Paul		—	✓	✓	✓	✓	✓	✓	N/A	

# Supporters need support, too

- Expanding the number of integration partners we work with in the school counseling space
- Expansion of advisor role usage
- Optimizing our Common App Ready toolkit and outreach





# Tips & Best Practices

---

- Create a practice account
- Use the advisor role to support students
- Watch video tutorials
- Explore the Common App website
- Check out the blog for updates
- Sign up for the monthly newsletter
- Use Common App Ready resources
- Follow #commonapp on social media
- Contact 24/7/365 support when you need it



[Recsupport.commonapp.org](https://recsupport.commonapp.org) or [sfsupport@commonapp.net](mailto:sfsupport@commonapp.net)



A group of students are sitting on bleachers in a school setting. They are holding laptops and looking at them, suggesting a tech-focused or collaborative learning environment. The image has a blue and purple color overlay.

# Campus-Level Best Practices

**Will Collins, Texas OnCourse Leader Fellow  
Counselor, Kingwood High School  
Humble ISD**

# Systems at Kingwood High School

## Humble ISD

- 12<sup>th</sup> grade guidance lessons
  - College Applications refresher (September)
- Counselors and letters of recommendation
- Registrars for transcripts
- 10/11th grade Parent/ College Night and Fair (April)
- 11<sup>th</sup> grade guidance lesson
  - College applications (May)
- Lone Star college application workshop (April)
- College room is open during lunch everyday for application/essay help

# Key Staff for Success

- Assistant Principal - College Parent night and College Fair, Pre ACT, PSAT testing, AP testing, College room
- Student Council Teacher- college recruiter visits and college fair
- Parent Volunteers- Train and staff college room volunteers.
- Counselors- College application guidance lessons, college night presentations, letters of rec, transcripts for Common App/Send EDU, attend college updates, one on one meetings with students.
- Registrar – sends official transcripts



# College Planning Overview

Explore colleges and build your college list

College visits, college/CTE fairs, online research, college room, counselor

Practice and take the ACT/SAT

Re-test- Scores often improve on the second try

Strengthen Your College list

Apply to Colleges

Most college applications open July heading into senior year

Scholarship research and applications

# College Application Tips

- Start Early- Most applications open by July 1<sup>st</sup>
- Research colleges- Admission requirements, Programs of study, Application fees
- Materials to gather:

Grades- GPA 4 & 5 point scale, class rank, activities, volunteer work, honors/awards, Personal demographic info. Work/internship experience, Leadership positions.

# Best Practice

**Lynn Hartnett, Corpus Christi ISD**

- ELA teachers assign ApplyTexas as a summer project. Students should:
- review ApplyTexas
- use ApplyTexas to create their resume
- know whether they qualify for a fee waiver and how to use/supply them
- review the essay topics and create and save at least one essay

# Testimonials

## Student Advice

“Do your research! You should be aware some applications have scholarship application embedded and for others, it is separate.”

Lynn Hartnett, Leader Fellow, Corpus Christi ISD



# Testimonials

## Student Advice

“Check carefully for mistakes! Leaving out important information (like your social security #) will cause a lot of problems down the road.”

Lynn Hartnett, Leader Fellow, Corpus Christi ISD



# Questions for our Guest Speakers

Type your question in the chat box!



# WEBINARS IN 2019-2020

September 3<sup>rd</sup> Using the Texas OnCourse Family Guide

October 1<sup>st</sup> Navigating Financial Aid

November 5<sup>th</sup>, Endorsements and Career Pathways

December 3<sup>rd</sup> A-F Accountability: Make an Impact Using Texas OnCourse

January 14<sup>th</sup> Families with Special Circumstances

February 4<sup>th</sup> Earning Credit in High School

March 3<sup>rd</sup> Making Careers Matter in Middle School

April 7<sup>th</sup> Effective Advising: Reducing Implicit Bias in Advising

May 5<sup>th</sup> Implementing the MS Curriculum Guide to improve CCMR

June 2<sup>nd</sup> NCAA/NAIA Resources and Guidelines



An aerial photograph of a winding asphalt road with yellow lane markings, curving through a dense, lush green forest. The perspective is from directly above, showing the texture of the trees and the smooth surface of the road.

# Thank you!

**TEXAS**  **NCOURSE**